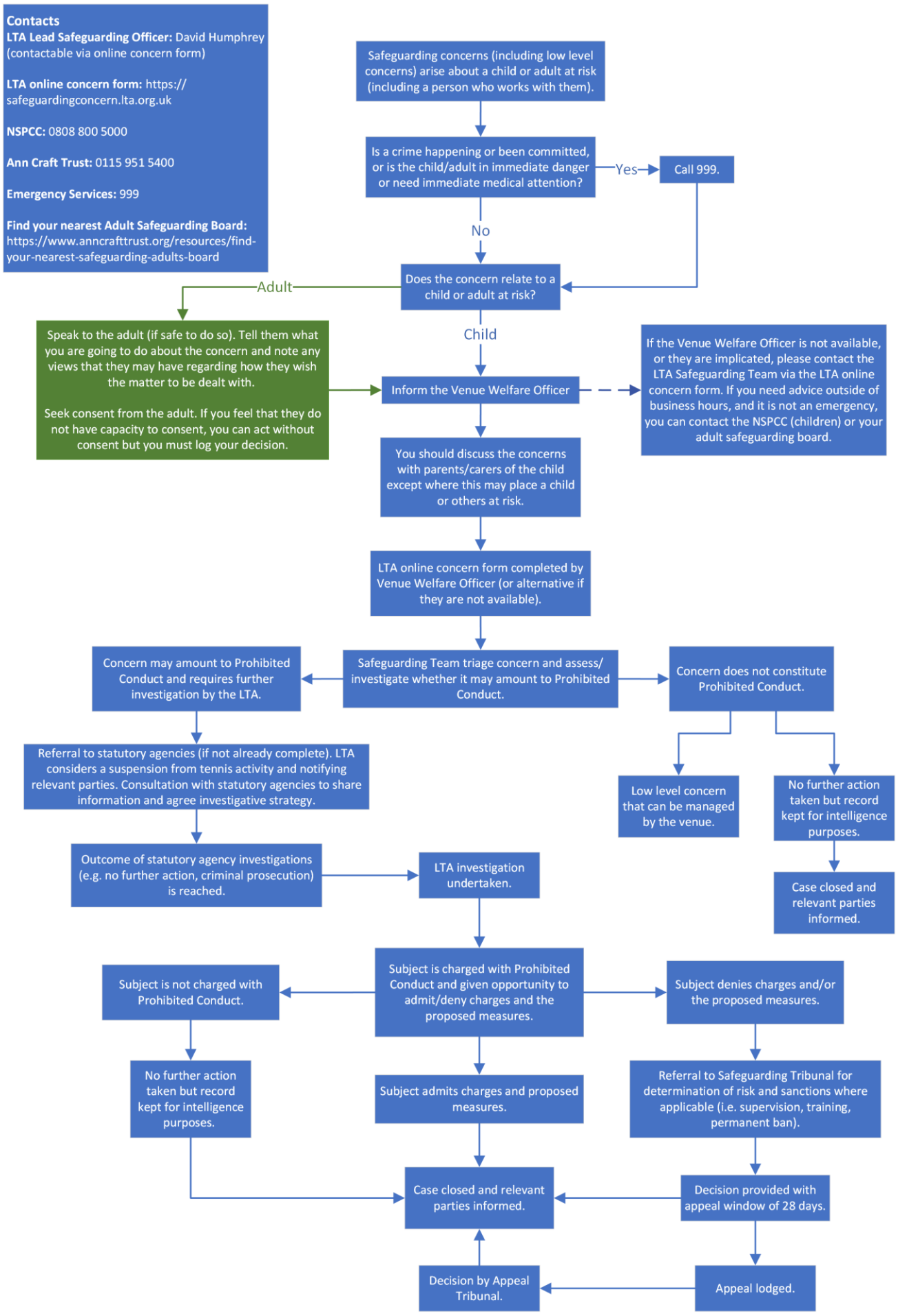


# REPORTING A SAFEGUARDING CONCERN THAT OCCURS WITHIN TENNIS



**Contacts**  
**LTA Lead Safeguarding Officer:** David Humphrey (contactable via online concern form)  
**LTA online concern form:** <https://safeguardingconcern.lta.org.uk>  
**NSPCC:** 0808 800 5000  
**Ann Craft Trust:** 0115 951 5400  
**Emergency Services:** 999  
**Find your nearest Adult Safeguarding Board:** <https://www.anncrafttrust.org/resources/find-your-nearest-safeguarding-adults-board>

Speak to the adult (if safe to do so). Tell them what you are going to do about the concern and note any views that they may have regarding how they wish the matter to be dealt with.  
 Seek consent from the adult. If you feel that they do not have capacity to consent, you can act without consent but you must log your decision.

If the Venue Welfare Officer is not available, or they are implicated, please contact the LTA Safeguarding Team via the LTA online concern form. If you need advice outside of business hours, and it is not an emergency, you can contact the NSPCC (children) or your adult safeguarding board.